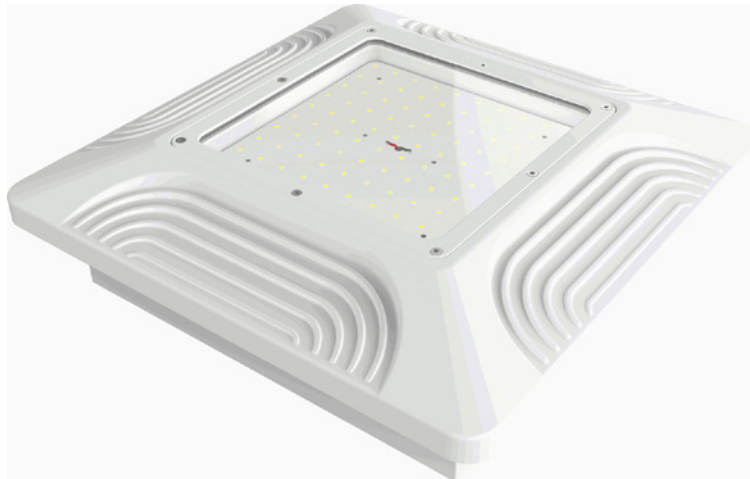


Andromeda

80W >10400 Lm
150 W >19500 Lm
200W >26000 Lm



Scope of application

Industrial lighting (Spaces with risk of explosion / Petrol stations / Fuel storage)

Description

Andromeda is a high-power industrial LED lighting device intended to be used in fuel and petrol stations. It offers an efficient alternative to conventional lighting.

Advantages

Reduced power consumption of up to 70% relative to conventional lighting sources.

Sleek, high-quality look.

Fixture

Fixture made of die cast and finished pure aluminium.

Impact, moisture and dust-resistant.

Optics

Tempered glass diffuser with clear lenses.

General Information

Mounting type: Suspended / Surface-mounted / Flush-mounted

LED type: SMD

Voltage: 100-277 VAC / 50-60 Hz

Operating temperature: -30 / +55

UGR: <19

CRI: >80

PF: >0.95

Angle: 120

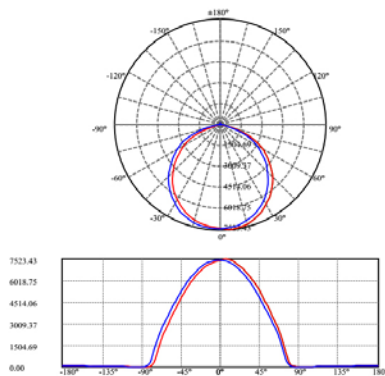
Technical data

Code	Power ^[W]	Luminosity ^[Lm]	Efficiency ^[Lm]	Colour Temp. ^[K]	Dimensions ^[mm]	Weight ^[kg]
AND80WW/NW/W-WH	80	>10400	>130	3000K/4000K/5000K	280x280x97	4.2
AND150WW/NW/W-WH	150	>19500	>130	3000K/4000K/5000K	382x382x112	6.6
AND200WW/NW/W-WH	200	>26000	>130	3000K/4000K/5000K	480x480x250	7.3

Accessories

Product code	Suspension system	Application system	Embedding clips	Emergency kit	0-10V Dim. driver	DALI Driver	Sensor
ALL CODES	YES	YES	YES	External	0-10	YES	External

Photometric diagrams



1.0m	7523.4 , 6182.8 lx	301.53cm
2.0m	1880.9 , 1545.7 lx	603.05cm
3.0m	835.9 , 687.0 lx	904.58cm
4.0m	470.2 , 386.4 lx	1206.10cm
5.0m	300.9 , 247.3 lx	1507.63cm
6.0m	209.0 , 171.7 lx	1809.15cm
7.0m	153.5 , 126.2 lx	2110.68cm
8.0m	117.6 , 96.6 lx	2412.20cm
9.0m	92.9 , 76.3 lx	2713.73cm
10.0m	75.2 , 61.8 lx	3015.25cm

Similar products

Aten



100W	>12000 Lm
150W	>18000 Lm
200W	>24000 Lm
220W	>26400 Lm

Unix



50W	>6000 Lm
80W	>9600 Lm
100W	>12000 Lm
120W	>14400 Lm
150W	>18000 Lm
180W	>21600 Lm
200W	>24000 Lm
230W	>27600 Lm

Ter



60W	>6600 Lm
120W	>13200 Lm
200W	>22000 Lm
240W	>26400 Lm
400W	>44000 Lm

Apolo



500W	>60000 Lm
1000W	>120000 Lm