

LINO



Power^[W] / Luminosity^[Lm]

- 5x12 W > 1500 Lm



General information

- Mounting type: Applied
- Type LED: COB
- Voltage: 200-240 VAC / 50-60Hz
- Operational temperature: -10 / +35
- UGR: <19
- CRI: >80
- PF: >0.9
- Angle: 30/45

Applications

- Commercial, Residential, Office, Horeca, Medical lighting

Description

- A lighting system with a modern design and great visual impact, on magnetic rail, ensuring remarkable elegance and ease of installation.

Benefits

- Very easy assembly, countless adjustment possibilities.

Body & Optics

- Ultra slim body on magnetic rail.
- Angular, clear-looking disperser



IP40 IK04

LINO

Technical data

Code	Power ^[W]	Luminosity ^[Lm]	Efficiency ^[Lm/W]	Colour temp. ^[K]	Measurements ^[mm]	Weight ^[kg]
LNO5W-WH/BK	5x12	1500		6000K	200x27x12	0.8
LNO5NW-WH/BK	5x12	1500		4000K	200x27x12	0.8
LNO5WW-WH/BK	5x12	1500		3000K	200x27x12	0.8

Code	System of suspension	Application system	Recessed clips	Kit of emergency	Driver size 0-10V	Driver DALI	Sensor
All codes	NA	Yes	NA	NA	Yes	Yes	NA

Accessories



L connector



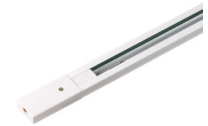
I connector



X connector



Rail 1m



Rail 2m